



## Slaymaker Pin Tumbler Push Key Padlocks


David Heuermann ... 2019

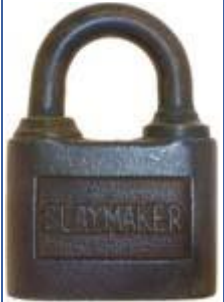
Slaymaker used round brass shackles on four large body padlocks. Three of these padlocks were prototype/demonstration and the fourth was a production 'SLAYMAKER' padlock.

No other Slaymaker logo padlocks were found having the round brass shackle.

	<p><b>Blank - Slaymaker Prototype/Demonstration.</b> 2.795" high x 1.965" wide x .743" deep. Alloy case. Brass shackle. Keyway: Paracentric. 2 Original keys. This lock is considered to be a prototype and was probably used only for demonstration purposes. Although there are no marks identifying it as a slaymaker lock, it operates with a factory cut Slaymaker key. This is the only lock known to exist. Mfg by: Slaymaker. (PK-LA-080#-S1 Pylant Page #44). "The David Heuermann Collection"</p>	1713
---	---	------

	<p><b>Blank - Slaymaker Prototype/Demonstration.</b> Brass case. Brass shackle. Keyway: Paracentric. This lock is considered to be a prototype and was probably used only for demonstration purposes. Although there are no marks identifying it as a slaymaker lock, it operates with a factory cut Slaymaker key. Mfg by: Slaymaker. (PK-LB-080#-S1 Pylant Page #44). "Courtesy Neil Pylant"</p>	1739
---	--	------

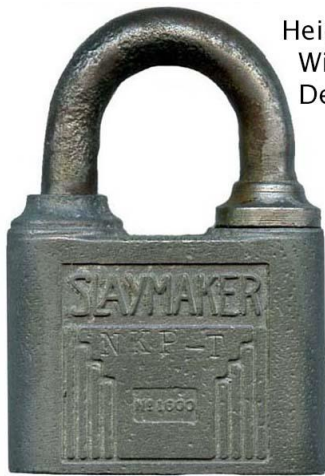
 <p>PK-LS-080#-S1</p>	<p><b>Blank - Slaymaker Prototype/Demonstration.</b> Steel case. Brass shackle. Keyway: Paracentric. We do not have a picture of the actual lock. The picture shown is from Neil Pylant's book. This lock is considered to be a prototype and was probably used only for demonstration purposes. Although there are no marks identifying it as a slaymaker lock, it operates with a factory cut Slaymaker key. Mfg by: Slaymaker. (PK-LS-080#-S1 Pylant Page #44). "Courtesy Neil Pylant"</p>	9090
--	---	------

	<p><b>"SLAYMAKER"</b>. Steel case. Brass shackle. Keyway: Paracentric. Mfg by: Slaymaker. (PK-LS-068-S3).</p>	<p>1706</p>
---	---	-------------

### Notes

For now, we believe the prototype/demonstration locks are real. We will update this document if there are any new discoveries.

### Slaymaker 1600



Height: 2.762"  
Width: 1.980"  
Depth: .780"



Spring Length: 1.295"

Continued on next page



Spring Plug

