

Looking ahead...

Railway Mail Service Library Foundation

Boyce Railway Depot Foundation

Presented September 25, 2020

Winchester Chapter 0180

National Active and Retired Federal Employees



*Railway Mail Service Library, Inc.
in the former N&W Railway station at Boyce, Virginia*

Good evening! My name is Frank Scheer and I am Curator of the Railway Mail Service Library as well as Secretary of both foundations.

The 1913 N&W station at Boyce, Virginia, has been the RMS Library's home since 2003. It is at the bottom of the hill along East Main Street from today's meeting at the Boyce Volunteer Fire Department's Social Hall. This specialized library supports research in worldwide RPO history. Supplemental pages summarize the depot's history, as well as an overview of the RMS Library activities.

Presentation Overview

- I. Introduction and Background
- II. Railway Mail Service Library Foundation
- III. Boyce Railway Depot Foundation
- IV. Future Directions

My commentary will be covered in under 30 minutes, allowing time for questions at the end. That is a reason for providing handouts with notes, so that if I move too swiftly, an explanation for presentation slides is available.

Introduction and Background

- **Railway Mail Service and the Postal Transportation Service** – organizations within the U. S. Post Office for the transportation and distribution of mail between 1864 and 1977. Mail was initially sorted in specially-equipped Railway Post Offices, but by the 1940s Highway Post Offices were also established. Air Mail and parcels were sorted at stationary facilities.



*RMS "Eagle" badge
introduced in 1899*

- **Railway Mail Service Library** – a specialized archival library presently located in the Boyce Railway Depot building which also owns two historic mail vehicles

The Railway Mail Service Library focuses upon primary-source documentation about its namesake, the Railway Mail Service. It also has two historic mail transportation vehicles. One is a 1931 Ford Model A Mail Truck that was used for transporting mail between a major city post office and the railway terminal. The other is a 1967 Highway Post Office, in which mail was sorted for post offices along its route.

Railway Mail Service Library

- Born as the AmeRPO (American Railway Post Office) Society library in 1952 by Bryan Alden Long.
- Transferred to Hershel E. Rankin in Florida and renamed RMS Library during the 1960s.
- Railway Mail Service Library (RMSL) collection sold to Frank R. Scheer during 1980 and moved from Alexandria to Boyce during 2004.
- The RMSL is a unique, archival collection of publications and artifacts pertaining to mail transportation primarily between 1864 and 1977.

The Railway Mail Service Library has had three curators during its existence. It has grown from about 100 books and publications when started in 1952 to thousands, including periodicals and documents. Artifacts pertaining to Railway and Highway Post Offices are also included in the collection.

Background - Continued

- **Railway Mail Service Library Foundation** – a non-profit public charity incorporated during 2017 for preservation of the archival library primary-source documents, artifacts, and two mail vehicles
- **Boyce Railway Depot Foundation** - incorporated during 2017 for future ownership and preservation of the railway station building;



Two Foundations were established during 2017. One will be the long-term custodian of the Railway Mail Service Library collection and provide research assistance to postal and railway historians. The other will provide maintenance, restoration, and interpretive uses of the 1913 Boyce railway depot.

II.
Railway Mail Service
Library
Foundation

1944 magazine advertisement
depicting a RPO interior



Traveling on a POSTAGE STAMP

How 3 billion pieces of wartime mail a year speed over the Water Level Route

Neither snow, nor rain, nor heat, nor gloom of night stays these couriers from the swift completion of their appointed rounds." —Herodotus

NOT ONE of the passengers aboard the 20th Century Limited ever sees foot here. This car is reserved for wartime movement of a different kind... tiny Y-mail... important last-line letters... registered envelopes packed with war contracts and blueprints... all part of the three billion pieces of mail that speed each year over New York Central.

Here, after lunch, as the Century lurches through the night, deft-fingered postal clerks sort this cargo of "preferential mail." And no matter, on arrival, the pouches and sacks will be made for immediate forwarding or delivery. Winter or summer, through storms or fair weather, these "post offices on wheels" provide lowest cost transportation for 50% of the nation's vast mail message. A vital war service of American railroads today. A service that will be still needed and more efficient aboard the finer, faster trains of tomorrow.

MILE-A-MINUTE SORTING
Pouches with mail from all parts of the United States are sorted into thousands of compartments for delivery. Then, finally loaded, they rush through the night on Century's Water Level Route.

WAITING "OPENMOUTHED"
These clerks watch every train. Each has a light that glows and tells the responsible worker to stop.

LAST BAG ABOARD!
The better the Century pulls out, several tons of last-minute mail are whisked from the last berth to the station. Then, before being quickly and accurately to the station, with frequency still for transportation between New York and Chicago, it will be returned to the post office.

TRAVELING MAIL BOX
The best quality, most comfortable of all, it has been specially designed for the purpose.

MAGNIFYING Y-MAIL
Clerks select and check, carefully checked, and delivered under a lamp. These letters, always get special preference and security. The New York Central's finest and highest quality, for the most part, will be delivered by train.

"GUARDING THE REDS"
Innocent people, like you, are usually included and excluded. Every clerk carries a gun. Besides, are listed in the presence of a armed clerk who stands as witness. And a special pack of mail is kept from those who are caught at work.

"PICKER-UPPER"
The most important thing, the Century does is to get the mail to you and help them with every step of the way. —Continued from our earlier article.

BUY MORE WAR BONDS

New York Central
ONE OF AMERICA'S RAILROADS—ALL UNITED FOR VICTORY

So what work was done within a RPO? This advertisement which was published by the New York Central System appeared in the *Saturday Evening Post*, *National Geographic*, and other publications during 1944. It provided a good overview of the principal functions performed within any RPO. These included the main line route between Washington and Cincinnati to which 60-foot RPOs were assigned similar to this cut-away view. The other divisions and branches utilized 30- and 15-foot apartment RPOs, or only handled "closed pouch" mail, usually in the custody of a baggage master. Storage mail cars were mostly in use along the spine and bridge lines. We'll discuss some of these in the next two slides, but the videos shown at the end of this presentation will provide much better insights to the orchestrated movements within a crew.

Railway Mail Service Library Foundation (RMSLF)

- The RMSLF was incorporated as a Internal Revenue Code 501(c)(3) non-profit Virginia corporation during 2017.
- During 2020, the RMSL collection will be managed and preserved by the RMSLF.
- RMSLF acquired 127 East Main Street, Boyce to construct a new Paul A. Nagle Archives behind the existing apartment building, formerly the town's manual telephone exchange prior to 1968.

The chief focus during 2020 will be developing a strong, capable membership base. Those who welcome leadership roles can be nominated by members to the Board of Directors. Officer positions will be filled from the Directors. Officer positions will be filled from the Directors. Elections to the Board of Directors will be made during the fourth membership meeting during November 2020.

Members and volunteers will initially support collection sorting, filing, and document conservation. The longer term vision is for the RMSLF to construct and maintain a new building for the collection through a gift from Paul Nagle, a former Railway Mail Clerk who became President of the National Postal Transport Association.

RMSLF - Continued



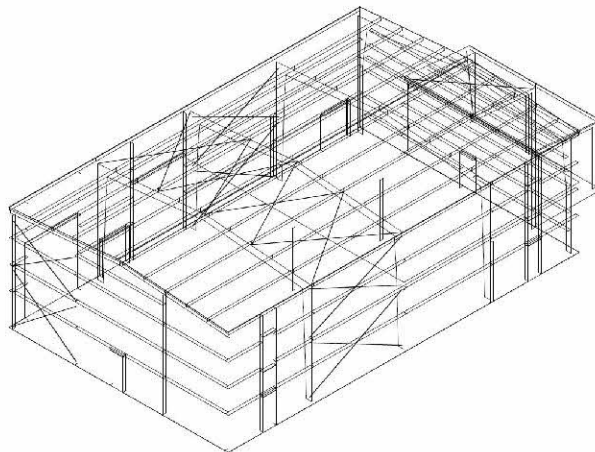
- Paul A. Nagle was the President of the National Postal Transport Association during the 1960s which represented the postal clerks assigned to Railway and Highway Post Offices.
- The RMSLF received a bequest from Mr. Nagle's estate with a stipulation *"... to assemble, preserve and to present in whatever form, the historical record of the Railway Mail Service and successor entities."*

Paul Nagle took a personal interest in the Railway Mail Service Library for three decades after he was interviewed for an oral history recording at a NEW YORK & PITTSBURGH RAILWAY POST OFFICE reunion. During the 1930s after growing up near Allentown, Pennsylvania, he began his postal career at the Reading Terminal, Philadelphia, then was assigned as a Railway Postal Clerk on the "PITTS." He became active in the Railway Mail Association, growing in prominence as he rose to become the Second Division President, then the President of the National Postal Transport Association. Following its merger which he negotiated with the National Association of Post Office Clerk to become the American Postal Workers Union, Mr. Nagle was appointed as the Director of the Equal Employment Opportunity branch within the Post Office Department, until retirement.

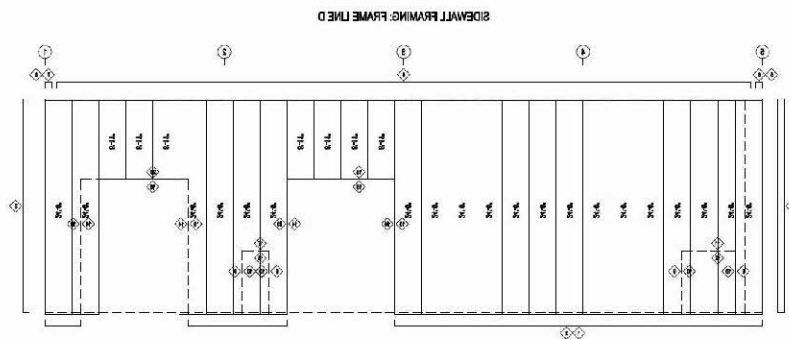
RMSLF - Continued

- The Nagle Archival Center will be a climate-controlled archival research building for RMSL documents and artifacts.
- The site plan for the proposed Nagle Archival Center at the rear of the 127 East Main Street may be approved by the Town of Boyce Planning Commission during October 2020.
- Site preparation and construction are planned during Spring and Summer, 2021, with occupancy during Autumn, 2021.
- The Nagle Archival Center will preserve vehicles in two garage bays. The remainder of the structure will house the archival library and research areas.
- The RMSL collection will be moved from Boyce depot to the Nagle Archival Center during 2022.

The RMSLF owns 127 East Main Street, Boyce, Virginia 22620-9629 which has a large rear lot that will accommodate the archival center measuring 50 feet deep, 80 feet wide, and 24 feet tall. A wire-frame drawing depicts the overall layout of the structure. The southeast corner is closest in this view. Howards Lane runs along the upper-left front of the building.



A west side view of the Paul A. Nagle Archives building appears below.



RMSLF Historic Vehicles

- Ford Model A - Mail Truck – 1931



The Ford Model A was a general-purpose truck used within cities for transporting mail between a main post office and its stations or branches, as well as between the railway depot and the main post office. This example has been fully restored and is in storage at Racine, Wisconsin, awaiting relocation to the Nagle Archival Center at Boyce when completed.

POSTAL A'S DATA BASE – Association of Ford Model A Truck Owners

Name: Railway Mail Service Library, Inc., Frank R. Scheer - President
Address: 117 East Main Street
City, State, ZIP Code, Country: Boyce, VA 22620-9639 USA
Phone numbers - cell, text: (540) 837-9090 (C), (571) 379-3409 (T)
eMail address: fscheer@railwaymailservicelibrary.org and f_scheer@yahoo.com

Own: Ford Model A mail truck
Year: 1930
Mail Truck Number: 10960, Vehicle Identification Number A3223032
Condition: Restored

History:

Mail truck 10960 was restored by Larry and Gary Koser. Alan Downs was the second owner. The Railway Mail Service Library is the third owner following restoration. Until completion of the Nagle Archival Center, the vehicle is stored at Racine, Wisconsin.

RMSLF Historic Vehicles

- Highway Products – Highway Post Office – 1967



A Highway Post Office (HPO) had mail distribution fixtures similar to those within a Railway Post Office (RPO). Average route lengths were 200 miles and several intermediate post offices were served between major city post offices at each end of a run. These operated between 1941 and 1974. This vehicle has been stored outside for three decades and urgently needs to be moved into a climate-controlled facility for restoration.

This Highway Post Office vehicle manufactured during 1967 is the sole survivor of its era. It is understood to have been owned by a Highway Contract Route operator for the CINCINNATI & CORBIN HIGHWAY POST OFFICE route. It was purchased by the U.S. Postal Service during the mid-1970s for display at exhibitions. Below is a 1983 view while on display in Arlington, Virginia.



After donation to a Virginia museum which did not have sufficient funding for preserving the vehicle, it deteriorated outside for 30 years to its present condition. It is restorable, but each passing day is a race against time until it can be moved inside of the Nagle Archival Center for restoration and permanent preservation by the RMSLF. It will be the principal display of how mail was sorted and transported within a network that no longer exists.

III.

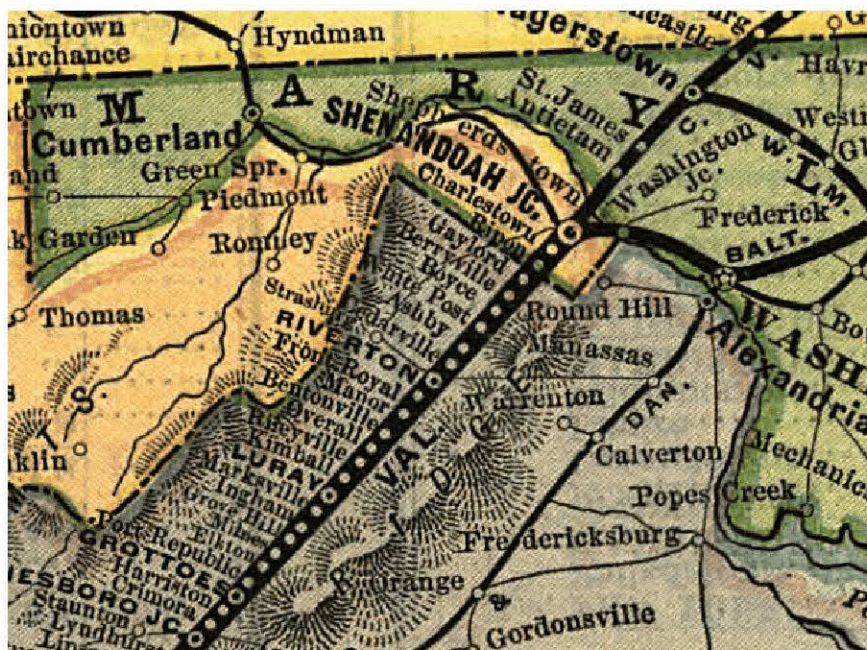
Boyce Railway Depot Foundation



Boyce Depot – The Town's Icon

A northbound Norfolk Southern freight train passes the 1913 depot building in this night photograph illuminated by the camera flash. This image was made by Jon Wright using techniques developed by the acclaimed industrial photographer, O. Winston Link.

The white house at the right was owned by the Norfolk & Western Railway during the 1920s until the 1950s. It was the home occupied by the Maintenance of Way Section Foreman, who was responsible for track and facility maintenance between White Post and Berryville, Virginia.



Boyce Railway Depot Foundation

- The Boyce Railway Depot Foundation (BRDF) was incorporated as a Internal Revenue Code 501(c)(3) non-profit Virginia corporation during 2017.
- During 2021, the RMSL collection will be moved out of Boyce depot and into the Paul A. Nagle Center that will be approximately 100 yards adjacent to the Norfolk Southern station lot.
- BRDF will manage the depot building when the Library collection is relocated to the Nagle Archival Center on the adjacent property.
- The BRDF will be responsible for building repairs, maintenance, improvements, and ownership expenses.

The Town of Boyce and its railway depot have enjoyed a long history together. Nearly as old as the town, the 1913 structure has served as its public gathering place, the portal through which travel and commerce passed, as well as becoming Boyce's icon.

Indeed, it was the crossing of a newly-built Shenandoah Valley Railroad with the Winchester and Berry's Ferry Turnpike that prompted the birth of a new community in formerly dense, forested land. Unlike Berryville, White Post, and Millwood, the Boyce community –briefly named Boyceville—sprung forth around a stop along the tracks relatively late in Clarke County's development. The town would not have existed were it not for the arrival of the Shenandoah Valley Railroad in 1879.



BRDF - Continued

- A display of railroad artifacts relevant to the Norfolk and Western Railway's Shenandoah Division will remain in the agent's office, records room, and small waiting room.
- The express room will have artifacts displays.
- The large waiting room and freight room will be available for use to earn preservation income:
 - Event rentals such as wedding receptions or art shows;
 - Town or county visitor's center; or,
 - Model railroad club layout.

The current depot, constructed by John P. Pettyjohn & Co. of Lynchburg, Virginia, replaced an 1880s wooden station adjacent to the turnpike, now named East Main Street and county route 723. The Norfolk & Western Railway (N&W), which acquired the Shenandoah Valley Railroad in 1890, undertook improvements during the early 1900s, including depot replacement. In 1912, it announced plans to construct a new station on the west side of the track, within the boundaries of the newly-incorporated town. The station was planned to be a modest building similar to those in other villages of less than 1,000 residents, at a projected cost of \$7,500. It would have been of wood construction with stoves for heating, oil lamps, and outside facilities.

Mr. Peter H. Mayo negotiated with the N&W to build a "first class" station instead of a smaller structure. Principal enhancements included masonry construction, clerestory windows for better air circulation during summer months, a fashionable stucco design, with electric lighting, central heating, and inside restrooms. It was spacious, modern, and comfortable –rivaling the best contemporary railway stations in small cities. These improvements were added at substantial cost. Mr. Mayo, along with Ms. Hattie Gilpin and Mr. R. Powell Page, contributed \$17,500, bringing the station's value to \$25,000 –a sizeable sum in 1913!

The N&W agency, Railway Express, and Western Union services closed on December 31st, 1958. Boyce depot was sold to a private owner as during 1959. The larger of the two waiting rooms was rented to the Post Office Department as the town's Post Office. Thus, it continued as a community hub until the Post Office moved to its present location on West Main Street in 1984. Benjamin Harrison, Russell B. Lloyd, and Eva P. Kibler were Postmasters during the 29 years that the Post Office was at the station. Several clerks and Rural Free Delivery carriers also worked there.

The building was passed through several owners between then and 2003. It had multiple uses, such as farm supply storage, a FISH charity, restaurant, and a woodworking shop. It is now looking toward to future preservation and community uses under the stewardship of the Boyce Railway Depot Foundation!

IV. Future Directions

- RMSLF and BRDF are the transition plan from private ownership to future public preservation of the depot at 117 East Main Street and the telephone exchange building at 127 East Main Street.
- Both foundations and the assets they will manage are consistent with the Town of Boyce's heritage and history.
- Each foundation promotes tourism and economic growth opportunities for both the Town of Boyce and Clarke County.

Boyce's history is joined at the hip with its 1879 railroad birth. A letter by an unknown writer dated March 9, 1880 gave a glimpse of life in Boyce during that time:

"Well old Clarke instead of being the ultimate thule is now the omphalones. You can reach Boyceville at almost any hour of the day from all parts of the known world. A train passes here in the morning at 8 1/2 o'clock on its way to Front Royal and returns at 10 1/2 on its way back to Shepherds town, connecting with the Winchester and Potomac at Charles Town. Another passes at 2 o'clock, returning at 3 1/2, connecting at Duffields Depot with the Baltimore and Ohio. You can't imagine what a change has taken place at Boyceville. A depot, a warehouse, and shanties innumerable have sprung up all around. Millwood has felt the advantages of the railroad and you would be astonished to see the volume of business going on between it and the depot. Poor Winchester makes no secret of its lamentations. Someone asked at a public meeting there 'Who has seen a Clarke Co. wagon in Winchester since that cussed railroad was built?'" [BOYCEVILLE, Hudson, John A., 2010, Pages 11-12]

The historic 1913 depot was a contributing structure for the designation of the Boyce Historic District. It is a tangible link to Boyce's economic development since the town was incorporated in 1910. Its future role will be convey the past splendor of rail travel, as well as being the gateway for commerce.

Meanwhile, the Railway Mail Service Library Foundation's Nagle Archival Center will be the newest piece of old history in Clarke County, uniquely preserving mail and rail documentation and artifacts within its walls. The Railway Mail Service Library has been –and always will be– at the grade crossing of railroad history and postal heritage.

You Can Guide That Future!

- RMSLF and BRDF membership is invited for individuals as well as organizations. Leadership roles as directors or officers are available for those who are aligned with each Foundation's historic preservation goals.
- Both foundations welcome financial, volunteer labor, and materiel donation support. Each is a 501(c)(3) public charity so contributions are tax deductible as provided for and to the extent allowed by law.
- Periodic events will be scheduled at each facility in Boyce, so please visit and learn about railroad and postal history!

Individuals and organizations can participate in the future development of either or both Foundations. Both entities can make substantial impacts upon these Foundations' projects.

The central focus for the RMSLF is the Archives building completion. The site plan is expected to be approved by the Boyce Planning Commission during January 2020. The total expenditure from Mr. Nagle's bequest for creating and revising the site plan, application fees, consultant reviews for the Planning Commission and Clarke County Sanitary Authority, water and sewer connection approvals, plus driveway requirements by the Virginia Department of Transportation, exceeded \$60,000. Electrical, plumbing, and building permits will add to this amount before site preparation and construction occurs, creating a shortfall between the Nagle donation and the total completion cost. A pledge of any amount towards funding, project support as a general or sub-contractor for labor, materiel, or equipment used during construction will aid towards completion during 2021.

BRDF is seeking a used pick-up truck or cargo van that is in operable or repairable condition to use for supporting building maintenance and restoration. The body condition is unimportant; an automatic transmission is preferred. The vehicle should be able to pass the Virginia state safety inspection, but it is possible to utilize a truck or van off-road on the depot grounds if the condition is not highway-worthy. Your assistance in providing a suitable vehicle will enable the BRDF to preserve Boyce's iconic structure for future generations. If a vehicle donation is not feasible, a pledge of any amount is invited towards funding for labor, materiel, or equipment used during restoration and maintenance during 2020 and beyond.

MEMBERSHIP APPLICATION

Your membership in either or both Foundations will support preservation and community use of the historic 1913 Norfolk & Western Railway station. Annual dues are \$10 and a life membership is \$250. Please provide the information below for the membership roster:

- Foundation: BRDF _____ RMSLF _____
- First, Middle Initial, Last Name: _____
- Mailing Address: _____
- City, State, ZIP Code: _____
- Telephone Number: _____
- eMail Address: _____
- Additional donation: _____

The chief focus of both the BRDF and RMSLF during 2020 will be developing a strong, capable membership base. Those who welcome leadership roles can be nominated by members to the Board of Directors. Officer positions will be filled from the Directors. Elections to the Board of Directors will be made during the fourth membership meeting during November 2020.

Annual membership dues are \$10, payable to the **BOYCE RAILWAY DEPOT FOUNDATION** or the **RAILWAY MAIL SERVICE LIBRARY FOUNDATION**. A life membership in either Foundation is available for \$250.

AmazonSmile

- BRDF and RMSLF are participating in the AmazonSmile program. When you shop at Amazon through the AmazonSmile portal and choose one of these foundations, Amazon will make a 0.5% donation based on your purchase price to the foundation you have selected. There is no additional cost to your purchase. All purchases you make this holiday season and all through the year when using AmazonSmile are eligible and this is an easy way to support the BRDF or the RMSLF.
- These links will take you to the AmazonSmile site for the foundation of your choice:
 - BRDF - <https://smile.amazon.com/ch/30-0965189>
 - RMSLF - <https://smile.amazon.com/ch/37-1852514>

Another means for Foundations support will not cost an individual anything. If a person purchases items from Amazon.com, they can log into one of the two links shown which is the AmazonSmile program. The same Amazon products, pricing, and special offers are available on AmazonSmile. A half of one percent of the product price will be donated by Amazon to the designated non-profit organization. Although this is 50 cents for every \$100 spent and may not appear to be significant, it is additional funding which aids payment of utility expenses. This program is perpetual and not limited to holiday season buying.

Non-Profit Employer ID Numbers

Each Foundation is an Internal Revenue Code 501(c)(3) public charity. Both are Virginia non-profit corporations. Membership dues are not tax deductible but other donations of money, real property, or personal property may be deductible to the extent allowed by the U.S. Internal Revenue Service.

■ BRDF EIN: 30-0965189

■ RMSLF EIN: 37-1852514



INTERNAL REVENUE SERVICE
P. O. BOX 2508
CINCINNATI, OH 45201

DEPARTMENT OF THE TREASURY

INTERNAL REVENUE SERVICE
P. O. BOX 2508
CINCINNATI, OH 45201

DEPARTMENT OF THE TREASURY

Date: APR 24 2017

ROYCE RAILWAY DEPOT FOUNDATION
117 EAST MAIN ST
BOYCE, VA 22620-9639

Employer Identification Number:
30-0965189
DLN:
2625310001257
Contact Person:
CUSTOMER SERVICE ID# 31954
Contact Telephone Number:
(877) 829-5500
Accounting Period Ending:
December 31
Public Charity Status:
509(a)(2)
Form 990/990-EZ/990-N Required:
Yes
Effective Date of Exemption:
January 20, 2017
Contribution Deductibility:
Yes
Addendum Applies:
No

Dear Applicant:

We're pleased to tell you we determined you're exempt from federal income tax under Internal Revenue Code (IRC) Section 501(c)(3). Donors can deduct contributions they make to you under IRC Section 170. You're also qualified to receive tax deductible bequests, devises, transfers or gifts under Section 2055, 2106, or 2522. This letter could help resolve questions on your exempt status. Please keep it for your records.

Organizations exempt under IRC Section 501(c)(3) are further classified as either public charities or private foundations. We determined you're a public charity under the IRC Section listed at the top of this letter.

If we indicated at the top of this letter that you're required to file Form 990/990-EZ/990-N, our records show you're required to file an annual information return (Form 990 or Form 990-EZ) or electronic notice (Form 990-N, the e-Postcard). If you don't file a required return or notice for three consecutive years, your exempt status will be automatically revoked.

If we indicated at the top of this letter that an addendum applies, the enclosed addendum is an integral part of this letter.

For important information about your responsibilities as a tax-exempt organization, go to www.irs.gov/charities. Enter "4221-PC" in the search bar to view Publication 4221-PC, Compliance Guide for 501(c)(3) Public Charities, which describes your recordkeeping, reporting, and disclosure requirements.

Letter 947

Date: MAY 05 2017

RAILWAY MAIL SERVICE LIBRARY
FOUNDATION
117 EAST MAIN ST
BOYCE, VA 22620-9639

Employer Identification Number:
37-1852514
DLN:
26093523001497
Contact Person:
CUSTOMER SERVICE TD# 31954
Contact Telephone Number:
(877) 829 5500
Accounting Period Ending:
December 31
Public Charity Status:
509(a)(2)
Form 990/990-EZ/990-N Required:
Yes
Effective Date of Exemption:
March 3, 2017
Contribution Deductibility:
Yes
Addendum Applies:
No

Dear Applicant:

We're pleased to tell you we determined you're exempt from federal income tax under Internal Revenue Code (IRC) Section 501(c)(3). Donors can deduct contributions they make to you under IRC Section 170. You're also qualified to receive tax deductible bequests, devises, transfers or gifts under Section 2055, 2106, or 2522. This letter could help resolve questions on your exempt status. Please keep it for your records.

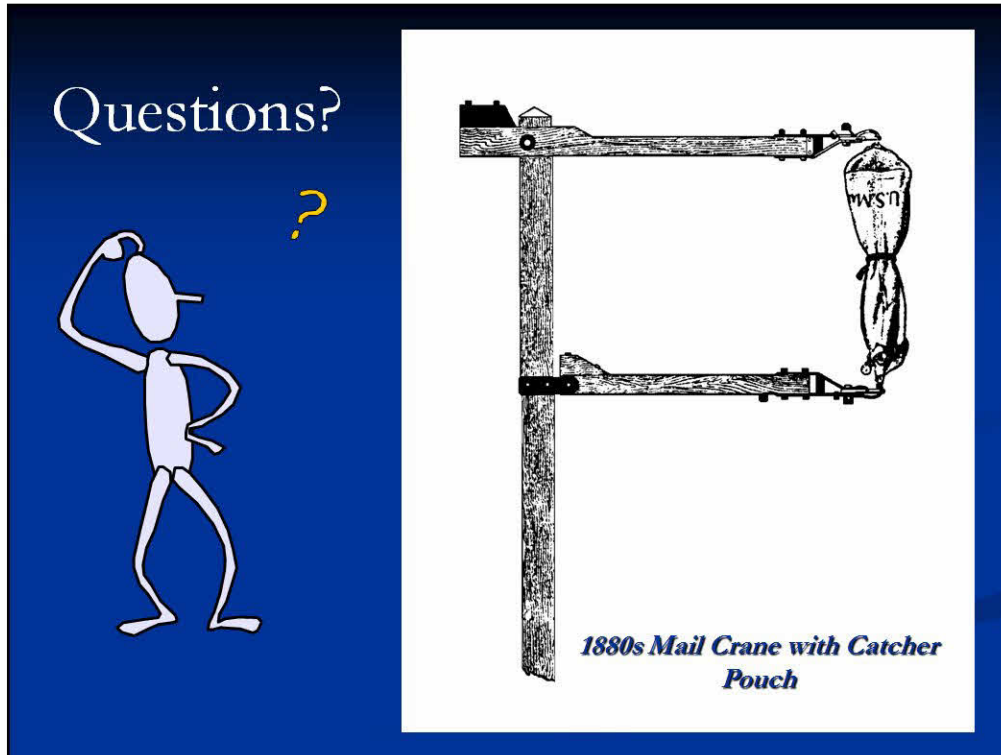
Organizations exempt under IRC Section 501(c)(3) are further classified as either public charities or private foundations. We determined you're a public charity under the IRC Section listed at the top of this letter.

If we indicated at the top of this letter that you're required to file Form 990/990-EZ/990-N, our records show you're required to file an annual information return (Form 990 or Form 990-EZ) or electronic notice (Form 990-N, the e-Postcard). If you don't file a required return or notice for three consecutive years, your exempt status will be automatically revoked.

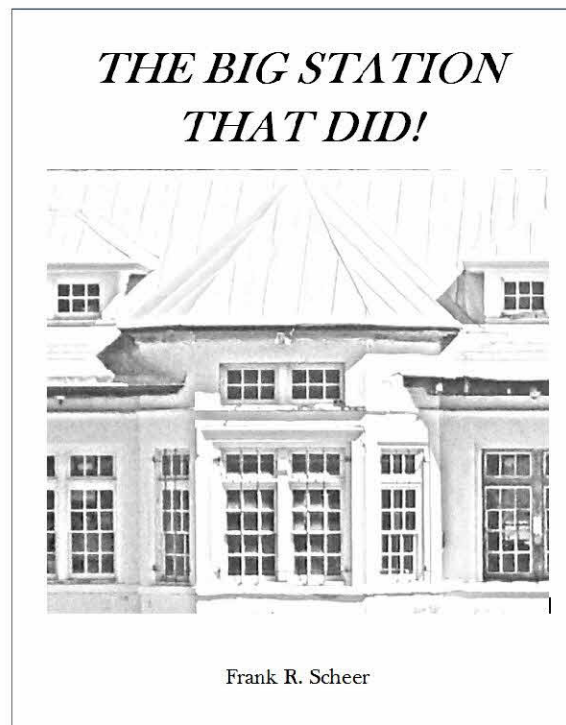
If we indicated at the top of this letter that an addendum applies, the enclosed addendum is an integral part of this letter.

For important information about your responsibilities as a tax-exempt organization, go to www.irs.gov/charities. Enter "4221-PC" in the search bar to view Publication 4221-PC, Compliance Guide for 501(c)(3) Public Charities, which describes your recordkeeping, reporting, and disclosure requirements.

Letter 947



There's only so much that one can cover during a 30 minute presentation. I'll welcome your questions and if you think of more later, my contact information appears on the last slide.



This children's story –suitable for all ages-- about Boyce depot is available for \$10 plus a \$3 mailing allowance. A complimentary copy is included in new BRDF memberships.

Thank you!

Frank R. Scheer
BRDF & RMSLF Secretary-Treasurer
brdf@railwaymailservicelibrary.org
rmslf@railwaymailservicelibrary.org
(540) 837-9090
117 East Main Street
Boyce, VA 22620-9639



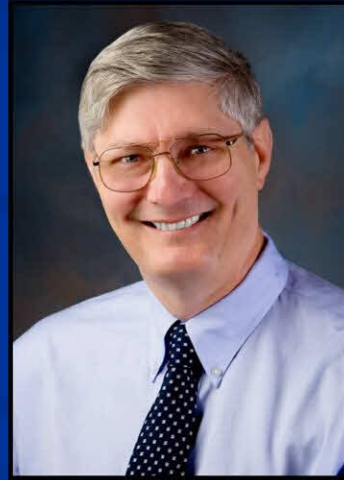
After today's presentation, please contact me via email at f_scheer@yahoo.com or the email addresses listed above. Thank you for attending!



About the Presenter...

Frank R. Scheer

- Foundations Organizer and current Secretary-Treasurer
- Transportation career includes working for three railroads, the United States Railway Association, Virginia Power/Dominion Resources, and the U.S. Postal Service



Dr. Frank R. Scheer has been Curator of the Railway Mail Service Library (RMSL) since 1980. He is the founding Secretary-Treasurer of two non-profit foundations based in Boyce, Virginia. The background and vision for these Foundations are today's topics.

Frank received a B.A. in Economics at the University of Virginia, Charlottesville. His M.B.A. and Doctorate in Business Administration are in Transportation and Logistics. These degrees were conferred by the University of Tennessee, Knoxville. Continuing his commitment to academic learning, Dr. Scheer is an adjunct Assistant Professor in the Graduate School of Business and Acquisition Management, University of Maryland Global Campus, teaching a graduate level course, Strategic Purchasing and Logistics. ASCM 629 is an investigation of issues and methodologies related to the procurement of supply chain management functions.